

DOOR FRAME & DESIGN SPECIFICATIONS

CONSTRUCTION:

Door and door frame constructed of 24 gauge pre-painted galvanized steel; polyurethane foamed-in-place insulation.

MAGNETIC GASKET

Specially designed vinyl covered magnetic gasket with welded corners for positive air-tight seal. Locks into built-in retainer. Fast easy replacement without tools.

DOOR CLOSER

Positive spring activated mechanism brings door to a smooth close.

RELIEF PORT

Heated air pressure relief port equipped on all rooms below 2°C / 34°F. Equalizes pressure when door is opened or closed. Heated valve prevents freeze-up.

HINGES

Heavy duty construction self closing cam action nylon bushings for long life.

SILL PLATE

14 GA. stainless steel plate reinforced to withstand heavy traffic.

DOOR FRAME HEATER

Low wattage heater cable prevents frost build-up. Surface mounted in perimeter raceways with chrome plated snap-on cover trim. Standard on all rooms below 0 °C / 32 °F.

HANDLE / LATCH

Heavy duty construction lever action padlockable. Equipped with quick acting inside safety release to prevent accidental entrapment.

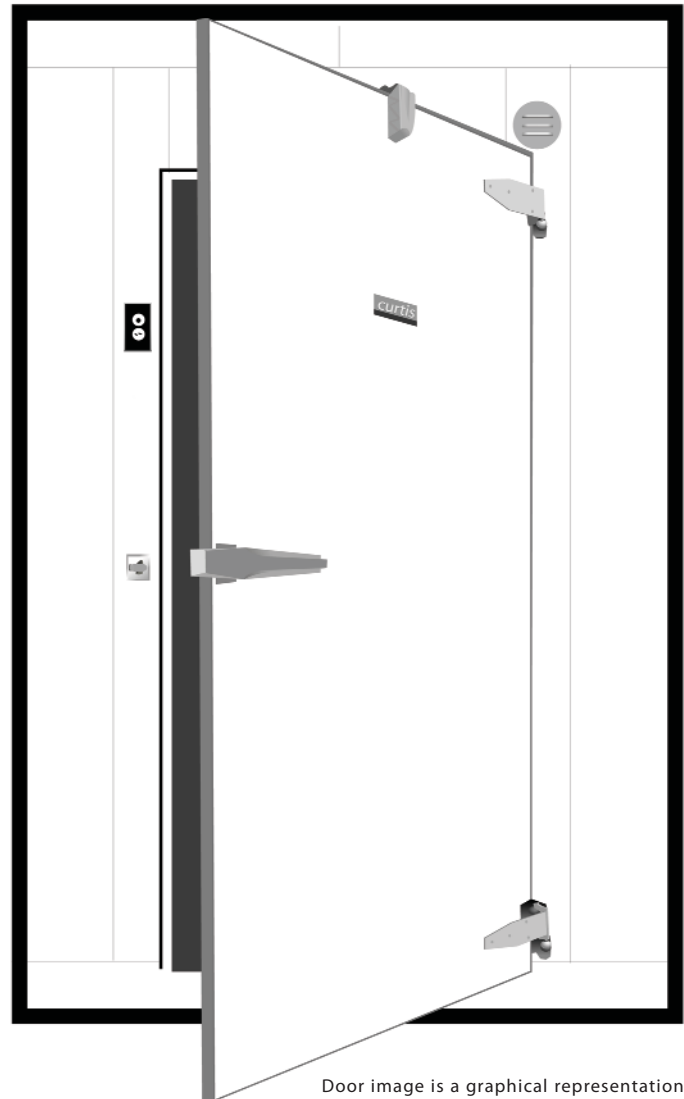
THERMOMETER

Flush mounted Curtis Electronic Digital Smart Control for accurate reading of interior temperature range from -40 °C to 20 °C.

LIGHTING

Factory Installed

Pilot light and switch mounted in stainless steel cover plate. Inter-wired to LED light fixture, switch mounted with smart control.



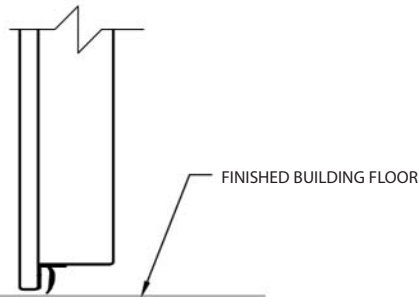
Door image is a graphical representation of Curtis door and door frame

WALK-IN FLOOR DETAILS

WALK-IN NO FLOOR

(STANDARD)

SCALE: N.T.S.

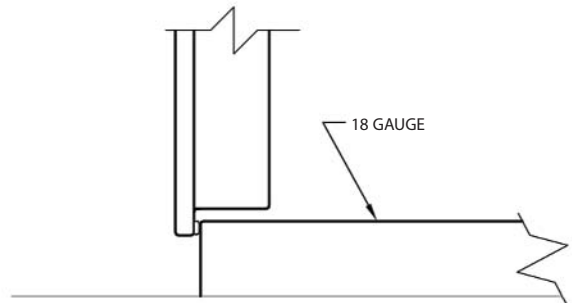


Curtis walk-in coolers (above 2°C) normally do **NOT** require floor insulation when slab-on-grade. Freezers (below 2°C) **ALWAYS** require floor insulation & interior/exterior thermal break.

WALK-IN 4" GALV. CLAD FLOOR

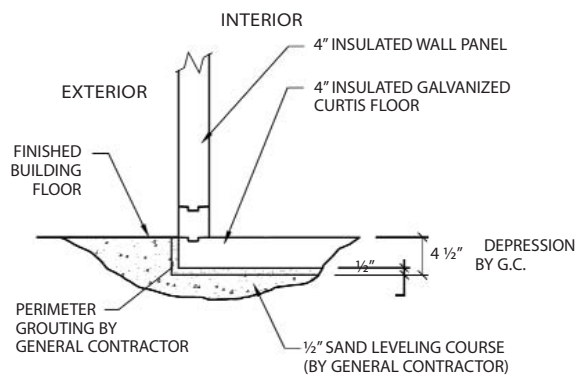
(STANDARD)

SCALE: N.T.S.



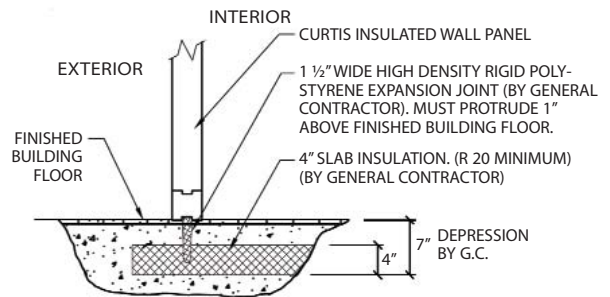
4-1/2" FLOOR DEPRESSION DETAIL

SCALE: N.T.S.



EXPANSION JOINT DETAIL

SCALE: N.T.S.



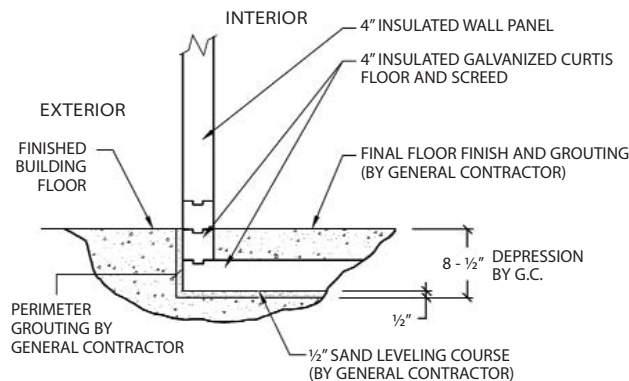
GENERAL CONTRACTOR

The expansion joint must be installed as to form an integral part with the slab insulation creating a continuous thermal barrier. The expansion joint must be installed in such a manner that it will not be lifted or torn during floor construction.

NOTE TO CONTRACTOR: NO BUTT JOINTS

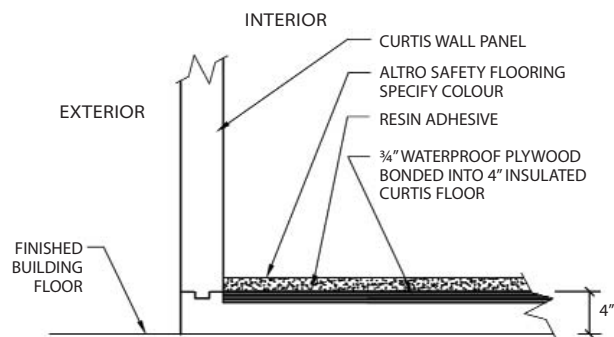
8-1/2" FLOOR DEPRESSION DETAIL

SCALE: N.T.S.



ALTRO SAFETY FLOORING DETAIL

SCALE: N.T.S.



curtis
VISSMANN GROUP

Canadian Curtis Inc.
380 McNeilly Rd., Unit #104-105
Stoney Creek, ON L8E 5E3

Tel: 1-866-328-7847

Email: info@canadiancurtis.com

www.canadiancurtis.com

*Specifications subject to change by Curtis without prior notice.